

Corners to be Indexed

N1/4 COR. SEC. 12-107-43

JAN 24 2022

Karen Brown

I hereby certify that this document and the data contained herein was prepared by me or under my direct supervision.

[Signature]

1/20/2022
Date

Daniel L. Bueltel

License No. 43844

CERTIFICATE OF LOCATION OF GOVERNMENT CORNER

Land survey monuments situated in Section 12, Township 107, Range 43, 5TH P.M.

STATE OF MINNESOTA, County of MURRAY

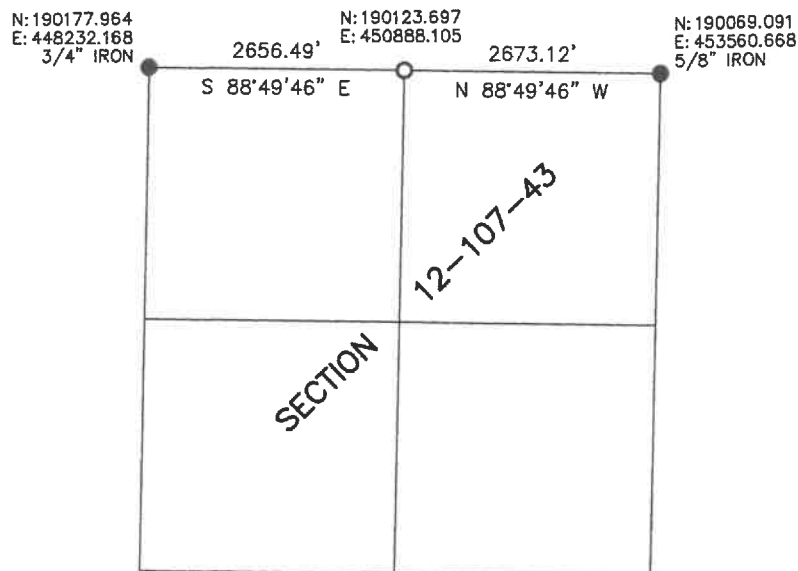
STATEMENT OF EVIDENCE: SECTION 12-107-43

N1/4 COR. SEC. 12-107-43

On June 8, 2021, Bueltel-Moseng Land Surveying found nothing. Set a 5/8" iron with seal #43844 on line between section corners and in line with well established occupation line to the North.



- FOUND MONUMENT
- SET MONUMENT
-5/8" IRON
W/SEAL #43844



Murray County Coordinate System (1996 Adj.)